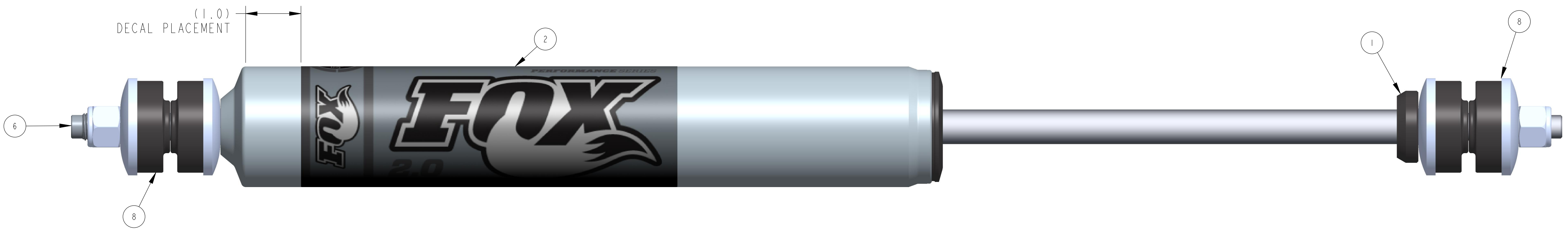
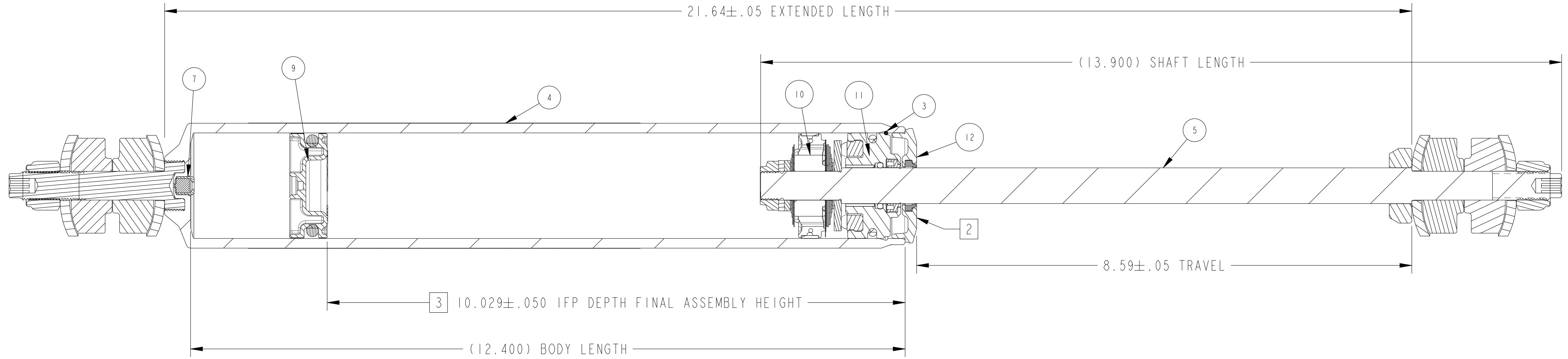


PROPRIETARY - THIS DOCUMENT CONTAINS CONFIDENTIAL, PROPRIETARY INFORMATION THAT IS FOX PROPERTY. DO NOT DISCLOSE TO OR DUPLICATE FOR OTHERS EXCEPT AS AUTHORIZED BY FOX.

REVISIONS				
ZONE	REV	DESCRIPTION	DATE	APPROVED
	A	RELEASED FOR PRODUCTION	9/18/13	BS
	B	MOVED SHAFT NUT TO VALVING ASSEMBLY	7/13/15	MD



ITEM	PART NUMBER	DESCRIPTION	QTY
1	008-01-000	Bumper: B/O [Ø 0.620 Shaft, 0.453 TLG] nitrile	1
2	024-04-031	Decal: O/R, [6.8" X 6.8"] Fox 2.0 Performance Series Body Decal	1
3	038-01-005	Retaining Ring: Wire [0.062 CS X 1.850 ID] 17-7 SS	1
4	207-19-124	Body: (T) [Ø 1.834 Bore, 12.400 Bore Depth, 12.850 TLG] Al 6061, Post Mount	1
5	229-68-113	Shaft: (T) [0.620 OD, 11.300 LG, 13.900 TLG Steel, Chrome, Solid, 1.400" Post Le	1
6	241-02-072	Fastener, Custom: Stud [1/2-20 Thread, 3.050 TLG]	1
7	802-00-026	Air Valve Assembly: Pellet Retainer w/ Pellet, Nitrile	1
8	803-00-701	Kit: Mounting Hardware, Ø.500 Stem Mount, 3.050 TLG, Stud	2
9	805-00-049	Piston Assembly: Floating [Ø 1.834 Bore, 0.650 TLG] w/ Standard O-ring	1
10	807-20-009	Valving Assembly: 2.0 Performance Series, Tuned Combination 009	1
11	812-07-027	Bearing Assembly: [Ø 1.834 Bore, Ø 0.620 Shaft, 0.995 TLG]	1
12	812-11-019	Bearing Assembly: Bearing Cap Assembly [Ø 1.834 Bore, Ø 0.620 Shaft] Black Ano,	1

NOTES:

- APPLICATION REFERENCE: LAND ROVER DEFENDER (83-95) & DISCOVERY I (94-98) FRONT - 0-1" LIFT.
- BEARING STAMPED WITH FOX PART NUMBER AND JOB NUMBER.
- IFP DEPTH DIMENSION IS AFTER FINAL ASSEMBLY. SEE DOCUMENT 610-05-112 FOR IFP PRE SEAL-HEAD INSTALLATION HEIGHT
- NITROGEN CHARGE PRESSURE 200 ± 10 PSI.
- SEE REFERENCE DRAWING 610-02-348 FOR SHAFT ASSEMBLY INSTRUCTIONS.
- SEE REFERENCE DRAWING 610-02-300 FOR BODY AND IFP ASSEMBLY INSTRUCTIONS.
- SEE REFERENCE DRAWING 610-05-060-XX FOR MOUNT CONFIGURATION INSTRUCTIONS.

UNLESS OTHERWISE SPECIFIED, DIMENSIONS ARE IN: INCHES [MM]	PER ASME Y14.5M 1994	<b>FOX Factory, Inc.</b> 130 Hangar Way, Watsonville, CA 95076 USA Ph 831-768-1100 Fax 831-768-9312
	APPROVALS	
TOLERANCES ARE: DECIMALS .XX [ .X ] ± .01 [ 0.25 ] .XXX [ .XX ] ± .005 [ 0.13 ]	ANGLES ± 1°	DWN. BY B. SMITH 11-Sep-13
THIRD ANGLE PROJECTION	DO NOT SCALE DRAWING	CHK. BY B. SMITH 11-Sep-13
TITLE 83-95 Defender & 94-98 Discovery I Land Rover, Front PS, 2.0, IFP, 8.6", 0-1" Lift		SIZE DWG. NO. <b>985-24-078</b>
PLOT SCALE 0.90:1		SHEET 1 OF 1