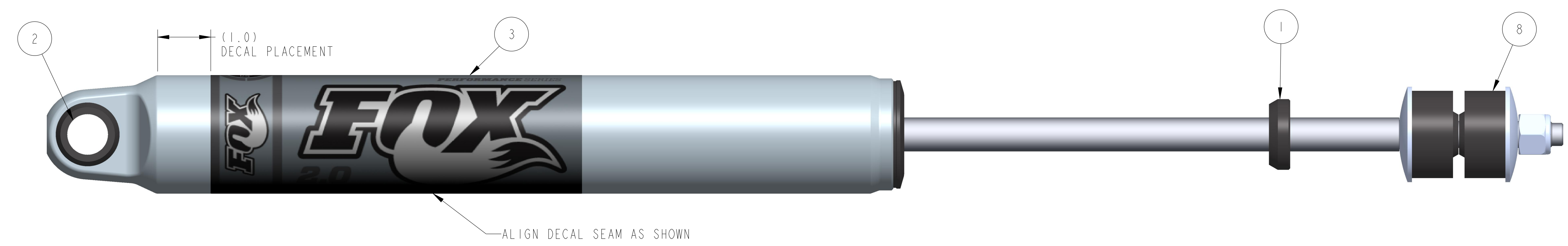
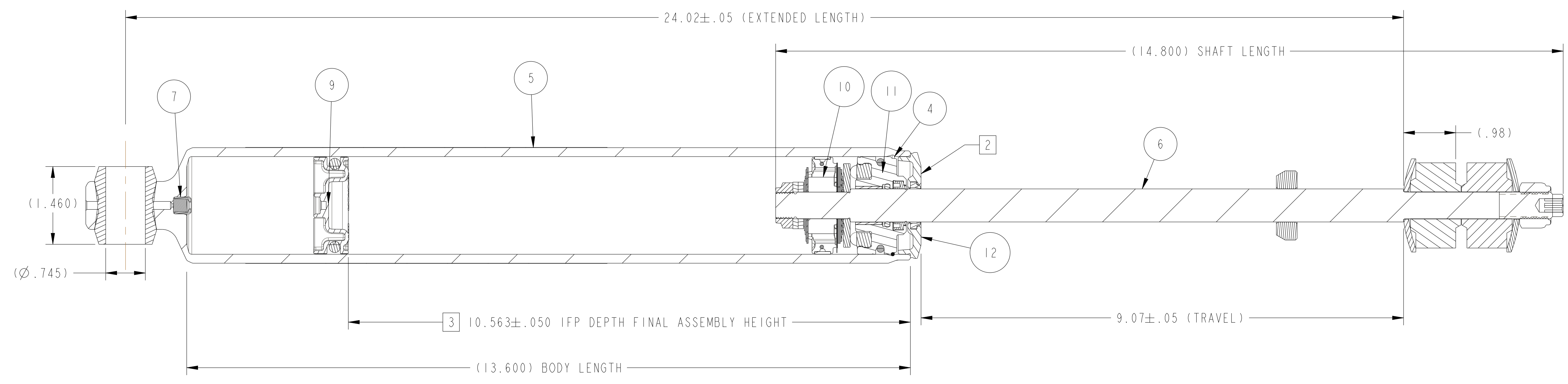


PROPRIETARY - THIS DOCUMENT CONTAINS CONFIDENTIAL, PROPRIETARY INFORMATION THAT IS FOX PROPERTY. DO NOT DISCLOSE TO OR DUPLICATE FOR OTHERS EXCEPT AS AUTHORIZED BY FOX.

REVISIONS				
ZONE	REV	DESCRIPTION	DATE	APPROVED
	A	PRODUCTION RELEASE	9/18/13	BS
	B	LONGER STEM AND BUSHINGS	4/3/14	V HANSO
	C	CHANGED BODY, SHAFT & MOUNTING ORIENTATION	4/16/15	MD



ITEM	PART NUMBER	DESCRIPTION	QTY
1	008-01-000	Bumper: B/O [∅ 0.620 Shaft, 0.453 TLG] nitrile	1
2	014-11-020	Bushing: Eyelet, Hourglass [∅ 0.750 ID X 1.460 TLG] Polyurethane, 85A	1
3	024-04-031	Decal: O/R, [6.8" X 6.8"] Fox 2.0 Performance Series Body Decal	1
4	038-01-005	Retaining Ring: Wire [0.062 CS X 1.850 ID] 17-7 SS	1
5	207-32-136-X	Body: (T) [∅ 1.834 Bore, ∅ 1.010 Eyelet Bore, 13.600 Depth] Al 6061, Hour Glass	1
6	230-05-118	Shaft: (T) [∅ 0.620 OD, 11.800 LG, 14.800 TLG Steel, Chrome, Solid, 1.400" Post Le	1
7	802-00-026	Air Valve Assembly: Pellet Retainer w/ Pellet, Nitrile	1
8	803-00-221	Kit: Mounting Hardware, ∅.500 Stem Mount	1
9	805-00-049	Piston Assembly: Floating [∅ 1.834 Bore, 0.650 TLG] w/ Standard O-ring	1
10	807-20-006	Valving Assembly: 2.0 Performance Series, Tuned Combination 006	1
11	812-07-027	Bearing Assembly: [∅ 1.834 Bore, ∅ 0.620 Shaft, 0.995 TLG]	1
12	812-11-019	Bearing Assembly: Bearing Cap Assembly [∅ 1.834 Bore, ∅ 0.620 Shaft] Black Ano,	1

- NOTES:
1. APPLICATION REFERENCE: LAND ROVER DEFENDER (83-95) & DISCOVERY 1 (94-98) REAR - 1.5-3.5" LIFT.
  2. BEARING STAMPED WITH FOX PART NUMBER AND JOB NUMBER.
  3. IFP DEPTH DIMENSION IS AFTER FINAL ASSEMBLY. SEE DOCUMENT 610-05-112 FOR IFP PRE SEAL-HEAD INSTALLATION HEIGHT
  4. NITROGEN CHARGE PRESSURE 200 ± 10 PSI.
  5. SEE REFERENCE DRAWING 610-02-299 FOR SHAFT ASSEMBLY INSTRUCTIONS.
  6. SEE REFERENCE DRAWING 610-02-300 FOR BODY AND IFP ASSEMBLY INSTRUCTIONS.
  7. SEE REFERENCE DRAWING 610-05-060-XX FOR MOUNT CONFIGURATION INSTRUCTIONS.

UNLESS OTHERWISE SPECIFIED, DIMENSIONS ARE IN: INCHES [MM]	PER ASME Y14.5M 1994	<b>FOX Factory, Inc.</b> 130 Hangar Way, Watsonville, CA 95076 USA Ph 831-768-1100 Fax 831-768-9312
	APPROVALS	
TOLERANCES ARE:	DWN: BY B. SMITH 11-Sep-13	TITLE
DECIMALS .XX (.XX) ± .01 [0.25]	CHK: BY	83-95 Defender & 94-98 Discovery 1
ANGLES ± 1°	ENG. B. SMITH 11-Sep-13	Land Rover, Rear
.XXX (.XX) ± .005 [0.13]		PS, 2.0, IFP, 9.1", 1.5-3.5" Lift
THIRD ANGLE PROJECTION	MFG.	SIZE DWG. NO.
DO NOT SCALE DRAWING	ADD.	<b>985-24-081</b>
		PLOT SCALE 0.90:1
		SHEET 1 OF 1