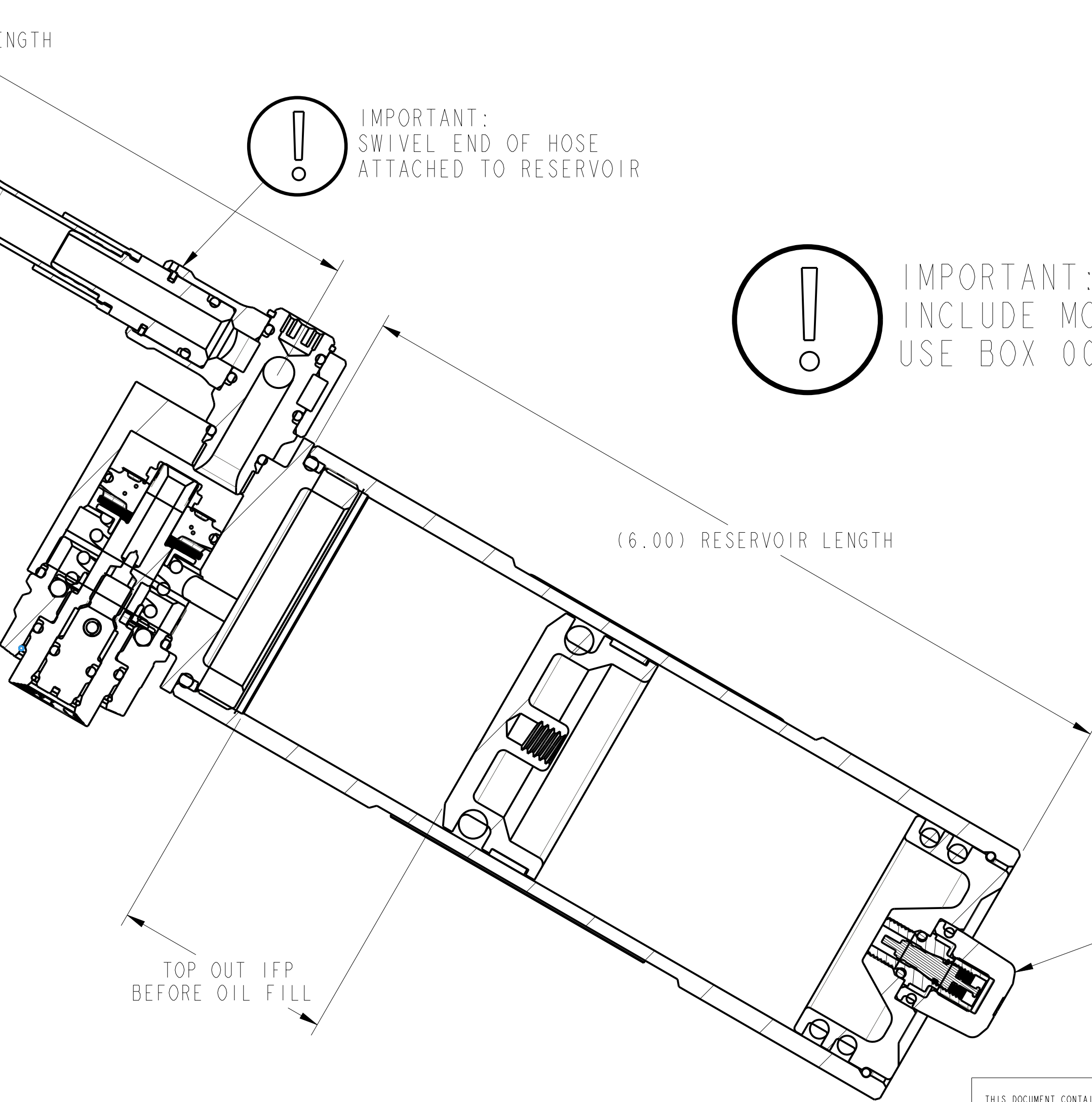
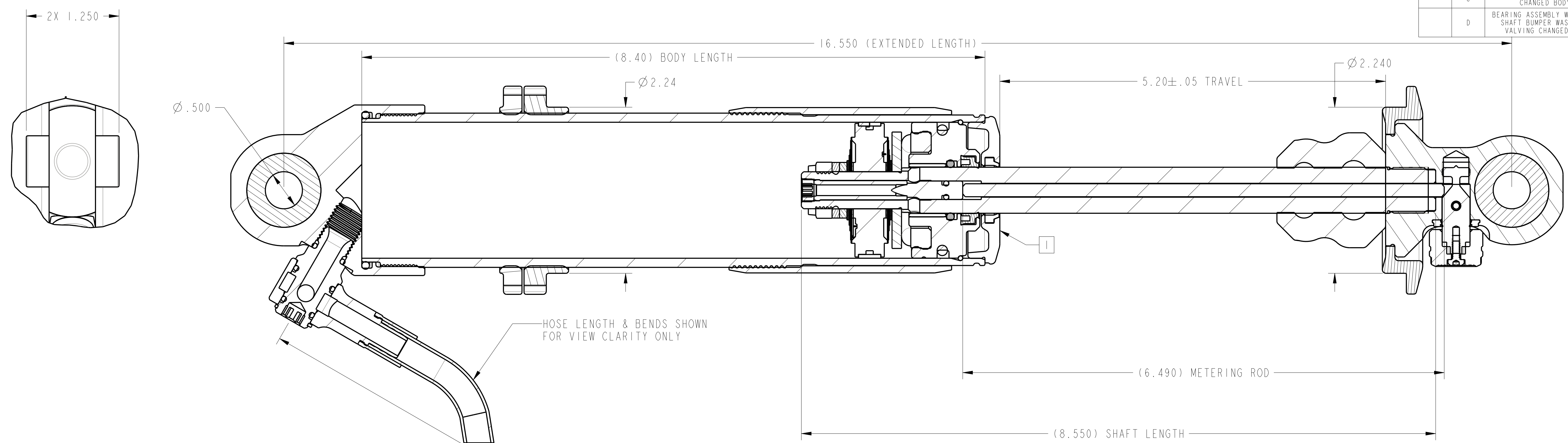


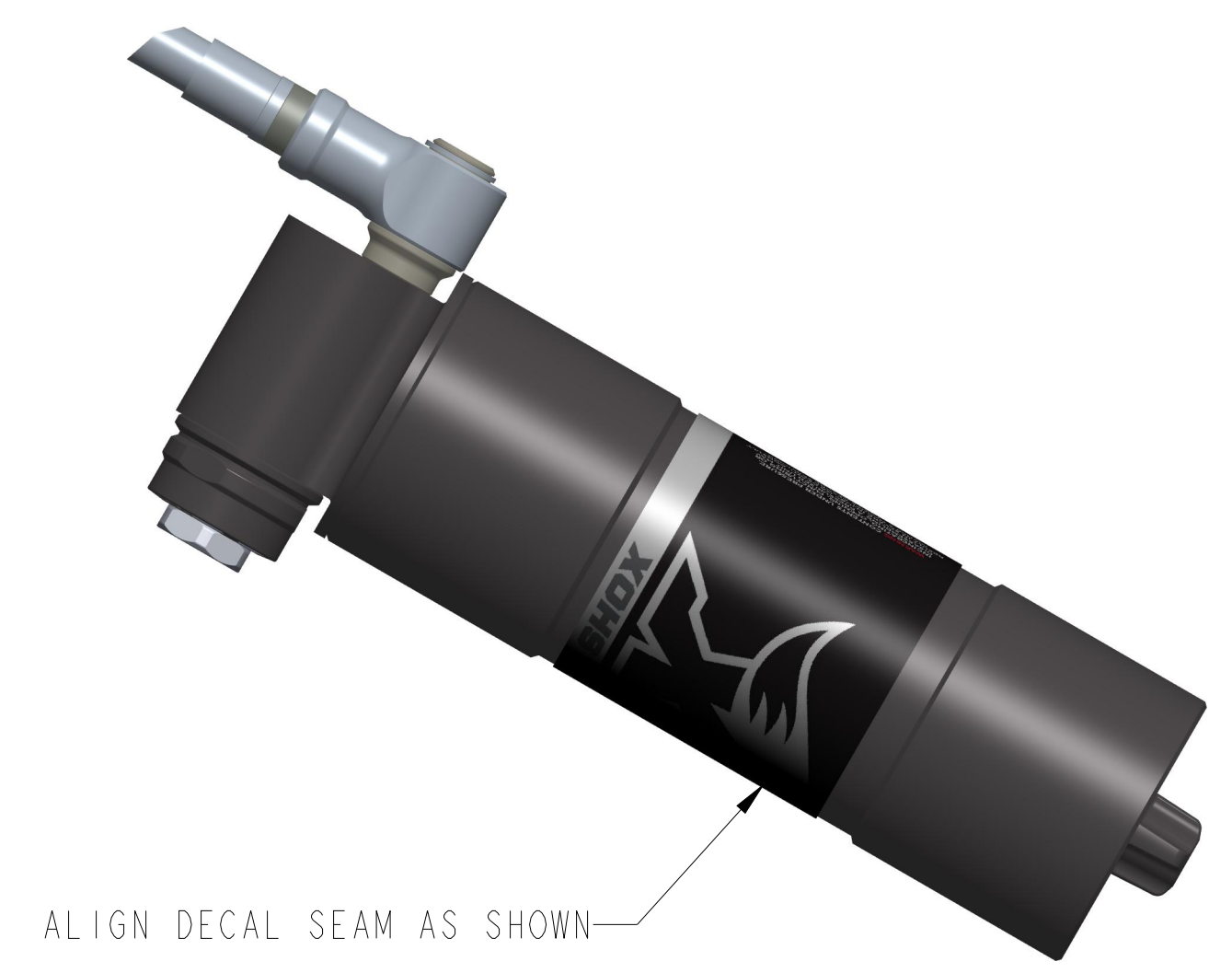
REVISIONS				
ZONE	REV	DESCRIPTION	DATE	APPROVED
	A	PRODUCTION RELEASE	9/2/14	MW
	B	RES1 MOUNTING KIT ADDED. CUSTOM VALVING OPTIONS ADDED	2/5/15	MW
	C	MOVED HOSE SWIVEL TO RESERVOIR CHANGED BODY GUARD	11/20/17	AC/MW
	D	BEARING ASSEMBLY WAS 812-07-027 SHAFT BUMPER WAS 008-02-013 VALVING CHANGED, BOX ADDED	1/24/19	MW



IMPORTANT:  
SWIVEL END OF HOSE  
ATTACHED TO RESERVOIR

IMPORTANT:  
INCLUDE MOUNTING KIT 803-02-002 IN BOX  
USE BOX 007-05-031 [28-3/4 x 5-3/4 x 5-3/4] PS COIL-OVER, OR

SHOCK NUMBER	VALVING NUMBER
984-02-107-1	807-12-207
984-02-107-2	807-12-208

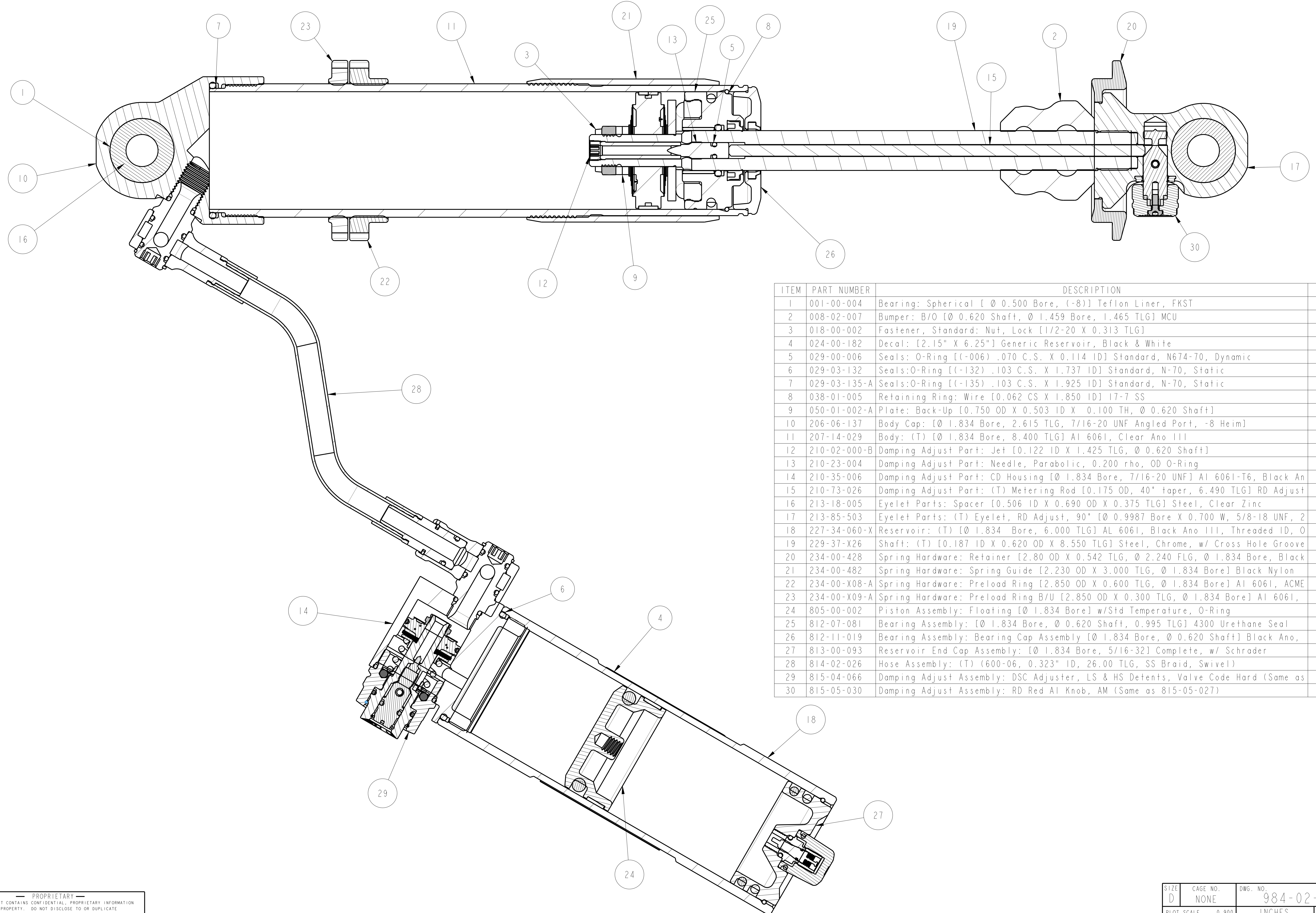


- NOTES:
- 1 ENGRAVE FOX PART NUMBER AND WORK ORDER NUMBER ON BEARING CAP
  - 2 NITROGEN PRESSURE: 125 PSI

PROPRIETARY - THIS DOCUMENT CONTAINS CONFIDENTIAL, PROPRIETARY INFORMATION THAT IS FOX PROPERTY. DO NOT DISCLOSE TO OR DUPLICATE FOR OTHERS EXCEPT AS AUTHORIZED BY FOX.

UNLESS OTHERWISE SPECIFIED, DIMENSIONS ARE IN: INCHES [MM]	PER ASME Y14.5M 1994	<b>FOX Factory, Inc.</b> 130 Hangar Way, Watsonville, CA 95076 USA Ph 831-768-1100 Fax 831-768-9312
	APPROVALS	
TOLERANCES ARE:	DWN: BY WALLACE	9/2/14
DECIMALS .XX (.X) ± .01 (0.25) ± 1°	CHK: BY	
ANGLES .XXX (1.XX) ± .005 (0.13)	ENG: M. WALLACE	9/2/14
THIRD ANGLE PROJECTION	MFG.	
DO NOT SCALE DRAWING	ADD.	
TITLE		PROLINX 2.0 AL C/O RR RC2 [16.6 Extended, 5.2 Travel]
SIZE DWG. NO.		D 984-02-107-XX
PLOT SCALE		0.90:1
		SHEET 1 OF 2





ITEM	PART NUMBER	DESCRIPTION	QTY
1	001-00-004	Bearing: Spherical [ Ø 0.500 Bore, (-8)] Teflon Liner, FKST	2
2	008-02-007	Bumper: B/O [Ø 0.620 Shaft, Ø 1.459 Bore, 1.465 TLG] MCU	1
3	018-00-002	Fastener: Standard: Nut, Lock [1/2-20 X 0.313 TLG]	1
4	024-00-182	Decal: [2.15" X 6.25"] Generic Reservoir, Black & White	1
5	029-00-006	Seals: O-Ring [(-006) .070 C.S. X 0.114 ID] Standard, N674-70, Dynamic	1
6	029-03-132	Seals:O-Ring [(-132) .103 C.S. X 1.737 ID] Standard, N-70, Static	1
7	029-03-135-A	Seals:O-Ring [(-135) .103 C.S. X 1.925 ID] Standard, N-70, Static	1
8	038-01-005	Retaining Ring: Wire [0.062 CS X 1.850 ID] 17-7 SS	2
9	050-01-002-A	Plate: Back-Up [0.750 OD X 0.503 ID X 0.100 TH, Ø 0.620 Shaft]	1
10	206-06-137	Body Cap: [Ø 1.834 Bore, 2.615 TLG, 7/16-20 UNF Angled Port, -8 Heim]	1
11	207-14-029	Body: (T) [Ø 1.834 Bore, 8.400 TLG] Al 6061, Clear Ano III	1
12	210-02-000-B	Damping Adjust Part: Jet [0.122 ID X 1.425 TLG, Ø 0.620 Shaft]	1
13	210-23-004	Damping Adjust Part: Needle, Parabolic, 0.200 rho, OD O-Ring	1
14	210-35-006	Damping Adjust Part: CD Housing [Ø 1.834 Bore, 7/16-20 UNF] Al 6061-T6, Black An	1
15	210-73-026	Damping Adjust Part: (T) Metering Rod [0.175 OD, 40° taper, 6.490 TLG] RD Adjust	1
16	213-18-005	Eyelet Parts: Spacer [0.506 ID X 0.690 OD X 0.375 TLG] Steel, Clear Zinc	4
17	213-85-503	Eyelet Parts: (T) Eyelet, RD Adjust, 90° [Ø 0.9987 Bore X 0.700 W, 5/8-18 UNF, 2	1
18	227-34-060-X	Reservoir: (T) [Ø 1.834 Bore, 6.000 TLG] AL 6061, Black Ano III, Threaded ID, O	1
19	229-37-X26	Shaft: (T) [0.187 ID X 0.620 OD X 8.550 TLG] Steel, Chrome, w/ Cross Hole Groove	1
20	234-00-428	Spring Hardware: Retainer [2.80 OD X 0.542 TLG, Ø 2.240 FLG, Ø 1.834 Bore, Black	1
21	234-00-482	Spring Hardware: Spring Guide [2.230 OD X 3.000 TLG, Ø 1.834 Bore] Black Nylon	1
22	234-00-X08-A	Spring Hardware: Preload Ring [2.850 OD X 0.600 TLG, Ø 1.834 Bore] Al 6061, ACME	1
23	234-00-X09-A	Spring Hardware: Preload Ring B/U [2.850 OD X 0.300 TLG, Ø 1.834 Bore] Al 6061,	1
24	805-00-002	Piston Assembly: Floating [Ø 1.834 Bore] w/Std Temperature, O-Ring	1
25	812-07-081	Bearing Assembly: [Ø 1.834 Bore, Ø 0.620 Shaft, 0.995 TLG] 4300 Urethane Seal	1
26	812-11-019	Bearing Assembly: Bearing Cap Assembly [Ø 1.834 Bore, Ø 0.620 Shaft] Black Ano,	1
27	813-00-093	Reservoir End Cap Assembly: [Ø 1.834 Bore, 5/16-32] Complete, w/ Schrader	1
28	814-02-026	Hose Assembly: (T) (600-06, 0.323" ID, 26.00 TLG, SS Braid, Swivel)	1
29	815-04-066	Damping Adjust Assembly: DSC Adjuster, LS & HS Detents, Valve Code Hard (Same as	1
30	815-05-030	Damping Adjust Assembly: RD Red Al Knob, AM (Same as 815-05-027)	1

PROPRIETARY  
 THIS DOCUMENT CONTAINS CONFIDENTIAL, PROPRIETARY INFORMATION  
 THAT IS FOX PROPERTY. DO NOT DISCLOSE TO OR DUPLICATE  
 FOR OTHERS EXCEPT AS AUTHORIZED BY FOX.

SIZE D	CAGE NO. NONE	DWG. NO. 984-02-107	REV. D
PLOT SCALE 0.900		INCHES	SHEET 2 OF 2