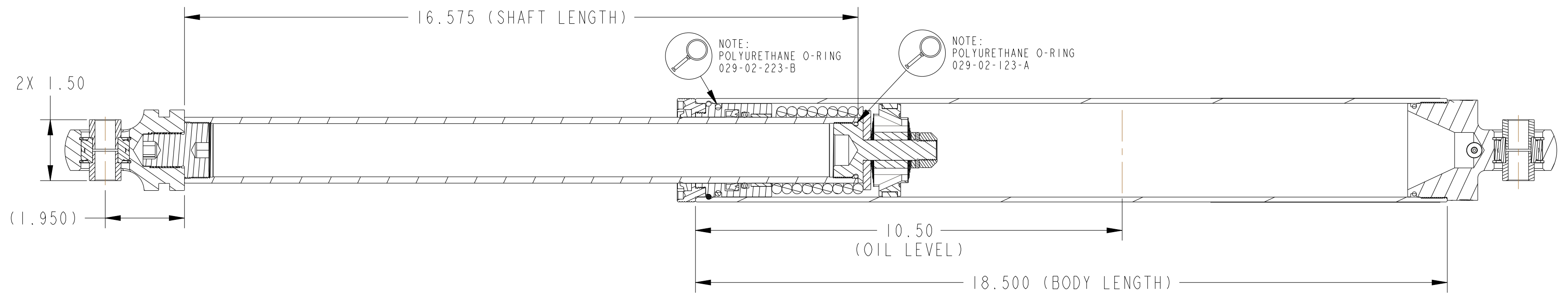
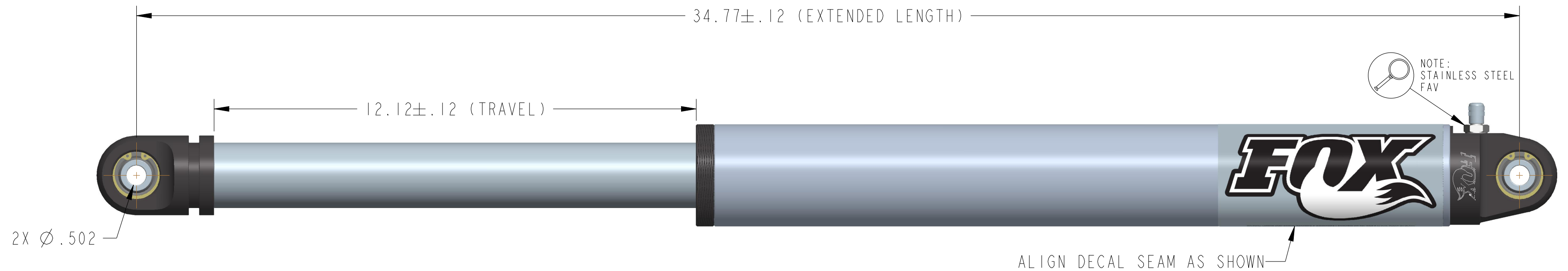


REVISIONS				
ZONE	REV	DESCRIPTION	DATE	APPROVED
	A	RELEASED FOR PRODUCTION	08/31/07	CM
	B	CHANGED VALVING PART NUMBERS	02/21/13	BS



PART NO.	VALVING
980-02-241	40/80 (2X .098 BLEED)
980-02-241-1	CUSTOM

- NOTES:
1. VALVING: SEE TABLE
 2. SEALS: STANDARD
 3. OIL LEVEL: 10.50" (520 cc)
 4. MOUNTING: 4X 213-01-036-D
 5. NITROGEN CHARGE: 200 ± 10 PSI

- PROPRIETARY -
THIS DOCUMENT CONTAINS CONFIDENTIAL, PROPRIETARY INFORMATION
THAT IS FOX PROPERTY. DO NOT DISCLOSE TO OR DUPLICATE
FOR OTHERS EXCEPT AS AUTHORIZED BY FOX.

UNLESS OTHERWISE SPECIFIED DIMENSIONS ARE IN: INCHES [MM]		PER ASME Y14.5M 1994	
TOLERANCES ARE:		APPROVALS	DATE
DECIMALS	ANGLES	DWN. BY	
.XX [.X] ± .01 [0.25]	± 1°	B SMITH	21-Feb-13
.XXX [.XX] ± .005 [0.13]		CHK. BY	
THIRD ANGLE PROJECTION		ENG.	
 DO NOT SCALE DRAWING		C MACKLIS	31-Aug-07
		MFG.	
		ADD.	

FOX FOX Factory, Inc. Ph 831-768-1100
130 Hangar Way, Watsonville, CA 95076 USA Fax 831-768-9312

TITLE: 12", Ø1.625, A/S
2.5 SERIES, BLACK

SIZE DWG. NO. **C** 980-02-241

PLOT SCALE | .00:1 | SHEET 1 OF 1